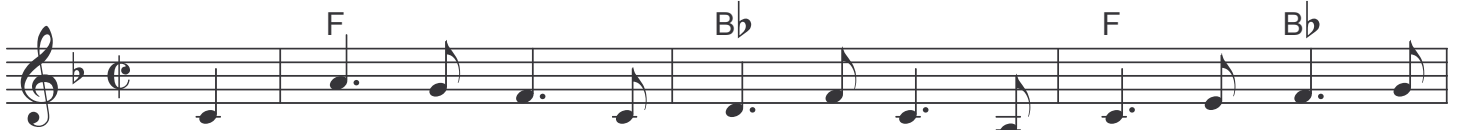


Twenty Years Ago



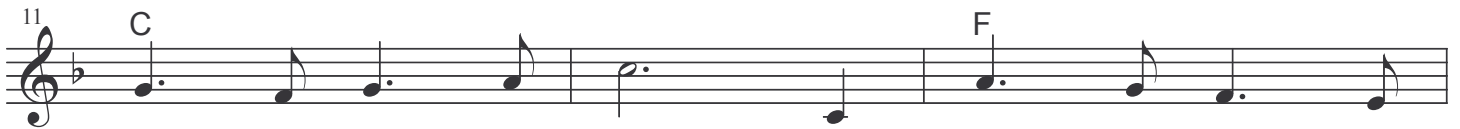
1. I've wan - dered to the vil - lage, Tom, I've stood be - neath the
 2. The grass is just as green, dear Tom, bare - foot - ed boys at
 3. The ri - ver's run - ning just as still. The wil - lows on its
 4. The spring that bub - bled 'neath the hill, close by the spread - ing
 5. Near by the spring up - on an elm, you know, I cut your
 6. My lids have long been dry, dear Tom, but tears came in my
 7. Some now are in the church yard laid, some sleep be - neath the



tree, Up - on the school-house play - ing ground, which shel - tered you and
 play, Were sport - ing just as we did then, with spir - its just as
 side Are lar - ger than they were, dear Tom, the stream ap - pears less
 beech, Is ve - ry low, 'twas once so high that we could al - most
 name. Your sweet-heart's just be - neath it, Tom, and you did mine the
 eyes. I thought of her I loved so well, those ear - ly bro - ken
 sea. But few are left of our old class, ex - cept - ing you and



me; But none were there to greet me, Tom, and
 gay; But the mas - ter sleeps up - on the hill which,
 wide; The grape - vine swing is ruin - ed now, where
 reach; And kneel - ing down to get a drink, dear
 same; Some heart - less wretch had peeled the bark, 'twas
 ties; I vis - it - ed the old church yard and
 me; And when our time shall come, dear Tom, and



few were left to know, That played with us up -
 coat - ed o'er with snow, Af - ford - ed us a
 once we played the beau, And swung our sweet - hearts,
 Tom, I start - ed so, To see how much that
 dy - ing sure but slow, just as the one whose
 took some flow'rs to strew, Up - on the graves of
 we are called to go, I hope they'll lay us



on the grass, some twen - ty years a - go.
 slid - ing place, just twen - ty years a - go.
 "pret - ty girls," just twen - ty years a - go.
 I had changed since twen - ty years a - go.
 name is cut died twen - ty years a - go.
 those we loved, some twen - ty years a - go.
 where we played just twen - ty years a - go.